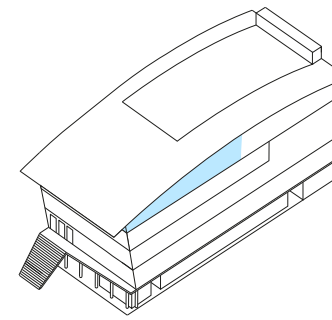


# RICCIONE CITY EYE

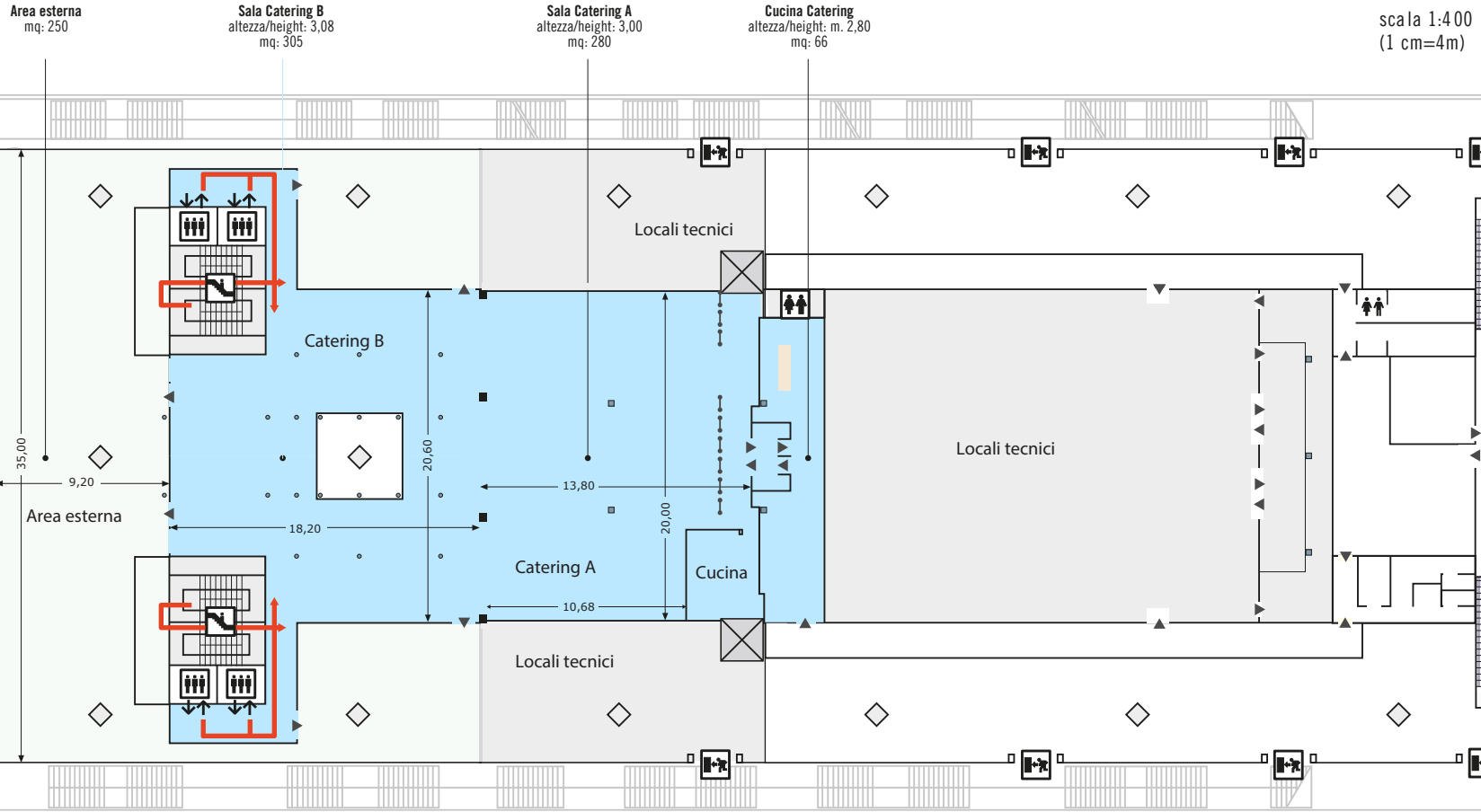
Spazio catering al servizio dell'attività congressuale di 585 mq (280 mq + 305 mq) + area esterna di 250 mq

*Covered space for catering, available for conferences 585 mq (280 mq + 305 mq) + open space of 250 mq*



ingresso entrance

- Livello 5 > riccione city eye
- Livello 4 > sale congressi / conference rooms
- Livello 3 > sala plenaria / plenary room
- Livello 1 > foyer congressi / conference reception hall
- Livello 0 > shopping area



Legenda  
Keys



➡ Accesso ai livelli superiori  
Access to the advanced levels

➡ Accesso dai livelli inferiori  
Access from the downstairs

▶ Ingresso alla sala