

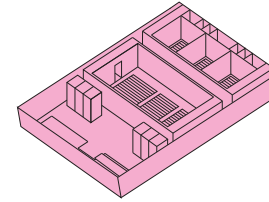
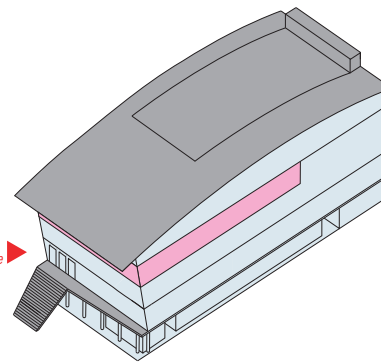
✘ AREE MULTIFUNZIONALI 4° PIANO

Multi-functional spaces 4' level

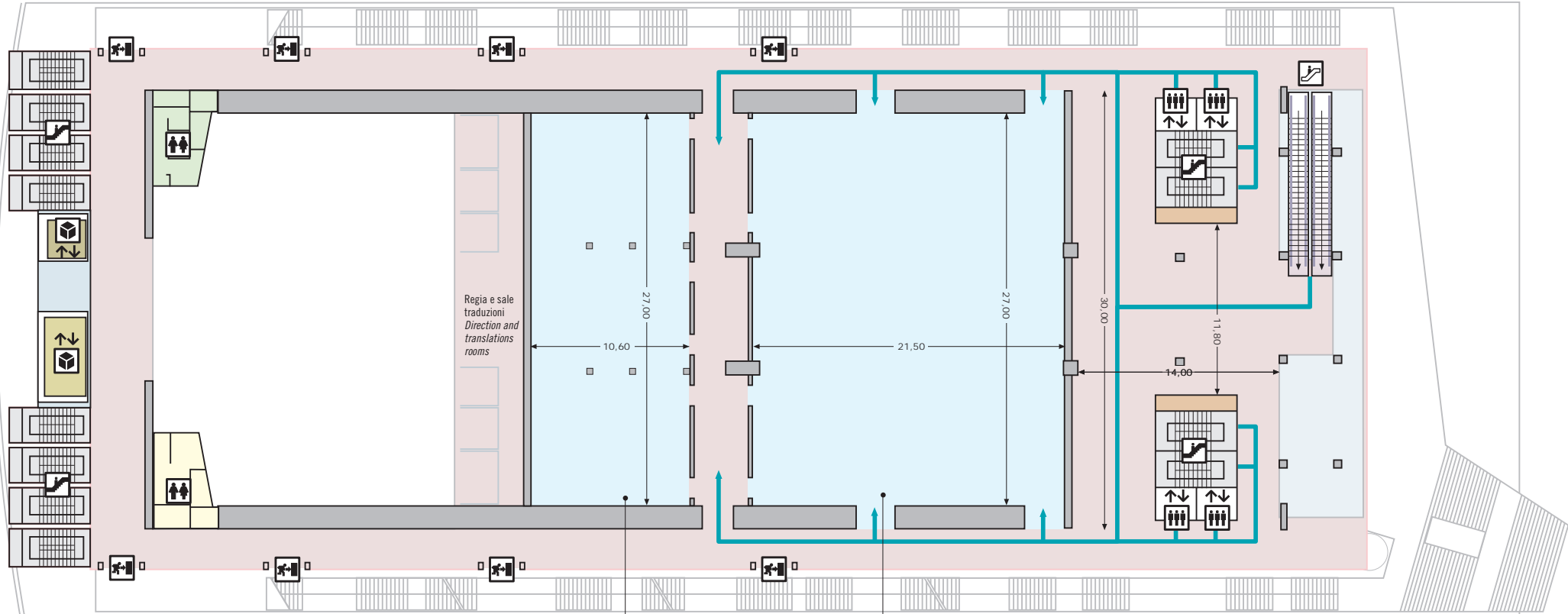
Aree espositive/catering di 286 mq
+ 580 mq.

Multi-functional spaces
(exhibitions/catering) of 286 sq.m.
+ 580.

ingresso
entrance



- Livello 5->riccione city eye
- Livello 4->sale congressi / conference rooms
- Livello 3->sala plenaria / plenary room
- Livello 2->sale cinematografiche / cinema halls
- Livello 1->foyer congressi / conference reception hall
- Livello 0->shopping area
- Livelli -1 e -2->garage



altezza/height: m. 4,70
mq: 286

altezza/height: m. 4,70
mq: 580

Legenda Keys



→ Accesso ai livelli superiori
Access to the advanced levels

→ Accesso dai livelli inferiori
Access from the downstairs

▶ Ingresso alla sala